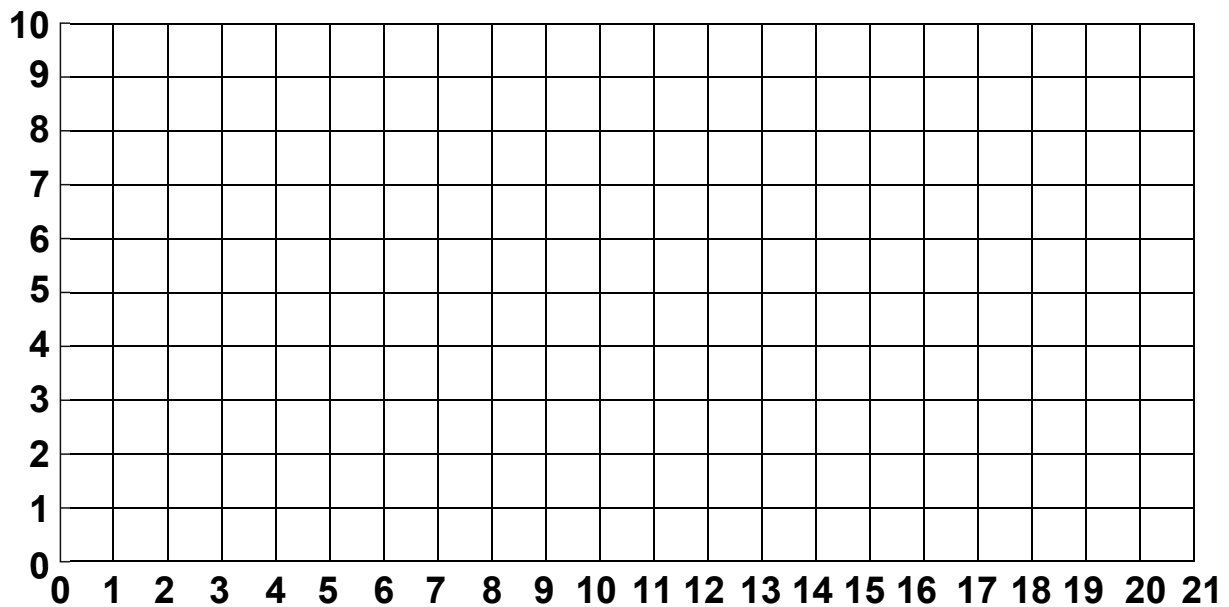




Plot these points and see what they make:

A star means start a new part of the drawing – do not join it to the other parts.



- (4,2) (20,2) (20,3) (4,3) (4,2) \*
- (5,3) (5,7) (7,7) (7,3) \*
- (11,3) (11,7) (13,7) (13,3) \*
- (17,3) (17,7) (19,7) (19,3) \*
- (20,7) (19,10) (5,10) (4,7) (20,7) \*
- (3,6) (1,5) (1,4) (3,3) (3,6) \*
- (3,5) (5,5) \*
- (7,5) (11,5) \*
- (13,5) (17,5) \*
- (19,5) (21,5) (21,4) (19,4) \*
- (17,4) (13,4) \*
- (11,4) (7,4) \*
- (5,4) (3,4)

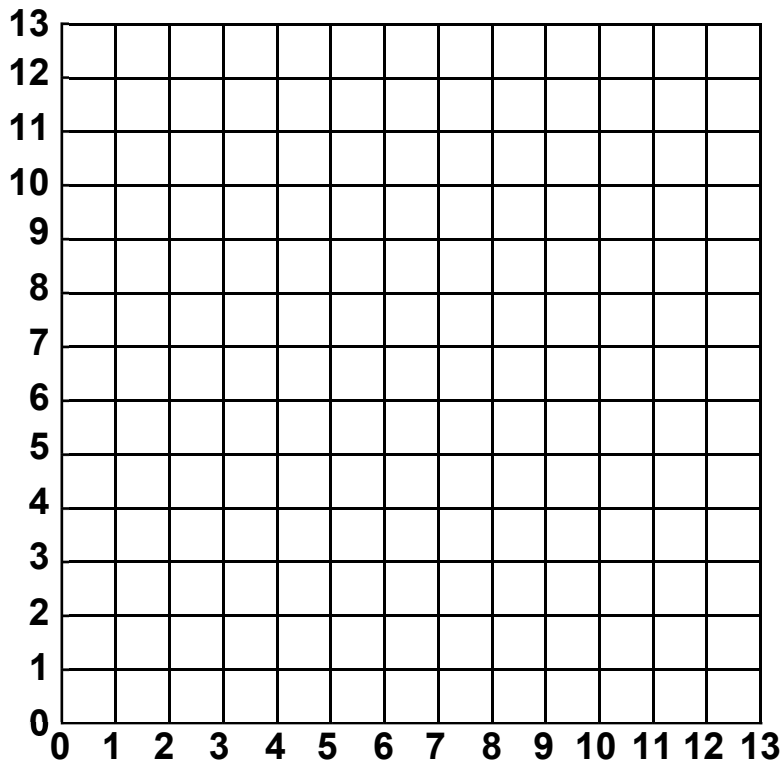
Draw three circles, each 1cm radius, with centres at (6,2), (12,2) and (18,2)

Colour in the shape.



Plot these points and see what they make:

A star means start a new part of the drawing - do not join it to the other parts.  
**(N.B. This shape is not symmetrical.)**



(6,0) (6,1) (4,1) (4,2) (3,3) (3,6) (2,6) (2,5) (1,4) (1,9) (2,8) (2,7) (3,7)  
 (3,9) (5,11) (9,11) (11,9) (11,7) (12,7) (12,8) (13,9) (13,4) (12,5) (12,6)  
 (11,6) (11,3) (10,2) (10,1) (8,1) (8,0) \*

(5,3) (9,3) (9,2) (5,2) (5,3) \*  
 (5,4) (8,4) (8,5) (7,6) (6,6) (5,5) (5,4) \*  
 (4,7) (6,7) (6,8) (5,9) (4,8) (4,7) \*  
 (7,7) (9,7) (9,8) (8,9) (7,8) (7,7) \*  
 (7,11) (7,13) (7,12) (6,13) (7,12) (8,13)

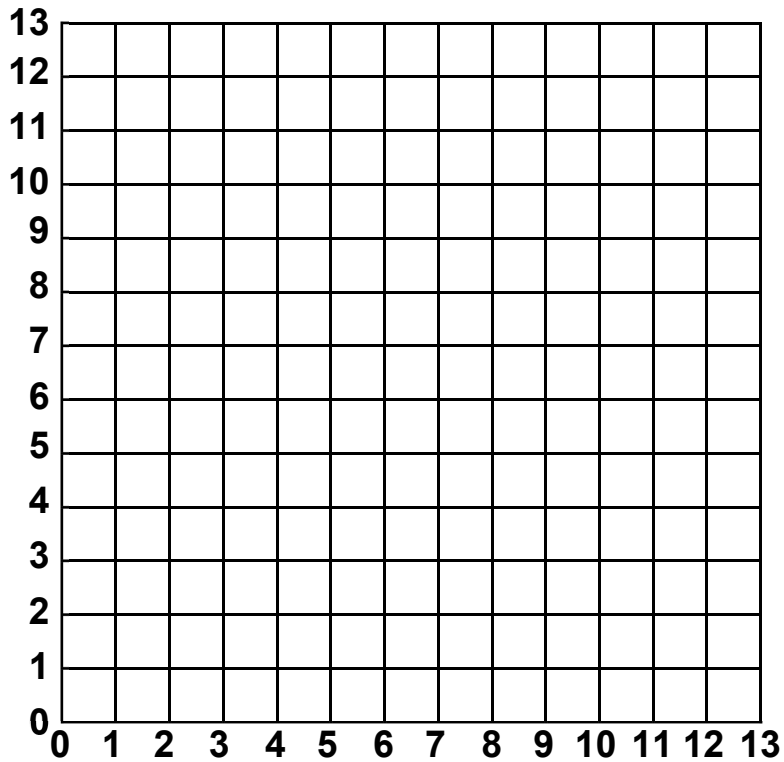
Colour in the squares:

(4,7) (5,7) (5,8) (4,8) \*  
 (7,7) (8,7) (8,8) (7,8)

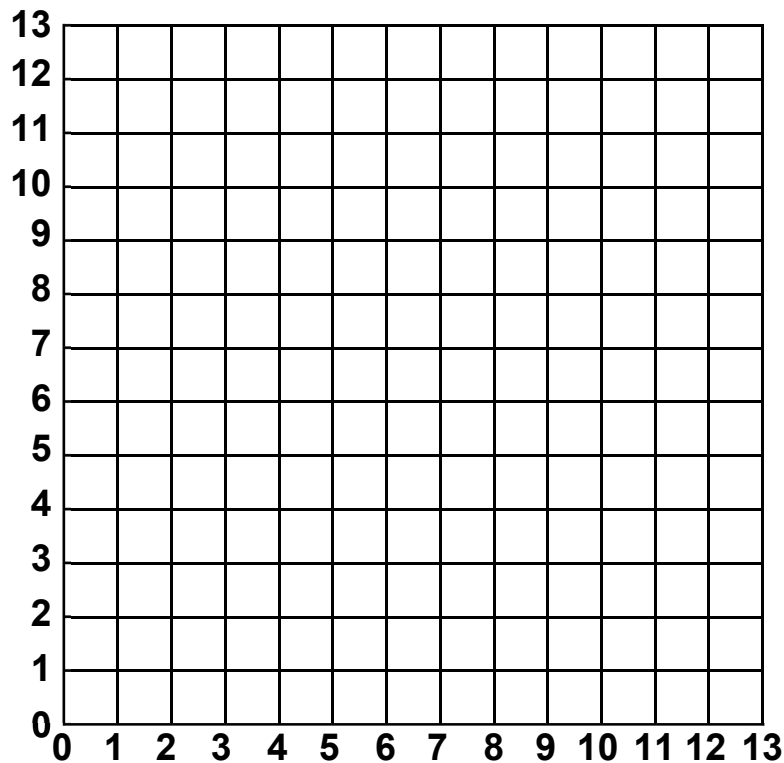


Draw your own face. It could be a robot, a cartoon character or an animal.

Use a star to mean 'start a new part of the drawing - do not join it to the other parts'.



Write down the co-ordinates of the points in your face.  
You could give the co-ordinates to a friend for him/her to draw your face.



The co-ordinates of the vertices of some polygons are given below.  
Draw the shapes on the grid above. **Then name the shapes.**

**Shape 1.**

(1,1) (3,1) (3,3) (1,3)

**Shape 2.**

(7,1) (10,1) (11,2) (11,3) (10,4) (7,4) (6,3) (6,2)

**Shape 3.**

(2,5) (5,6) (2,8)

**Shape 4.**

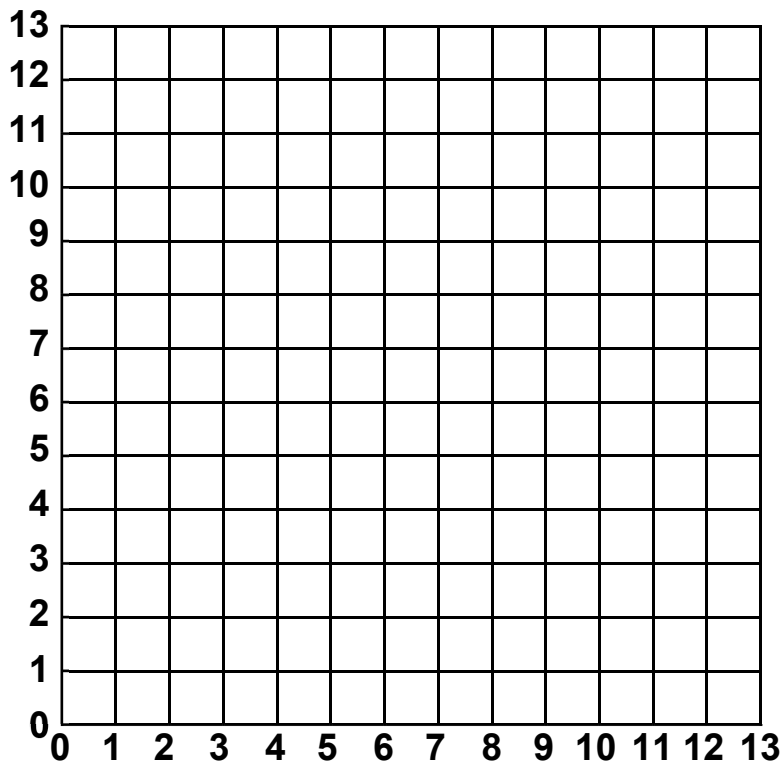
(2,9) (2,12) (5,12)

**Shape 5.**

(7,7) (9,7) (11,9) (9,11) (7,10)

Can you colour the  
**perpendicular** lines red?





Here are some shapes. In each shape one pair of co-ordinates is missing. Draw the shapes on the grid and say what the missing co-ordinates are.

**Shape 1. A Rectangle.**

(1,5) (1,0) (2,0) Missing co-ordinates (   ,   )

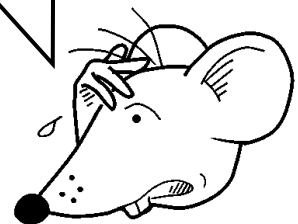
**Shape 2. A Square.**

(8,2) (8,6) (4,6) Missing co-ordinates (   ,   )

**Shape 3. An Isosceles Triangle.**

(8,9) (10,12) Missing co-ordinates (   ,   )

Crikey! That last one is difficult. I think it has **two** answers. Phew! Blow me down!





## Answers

### **Page 1**

The picture is a medieval battering ram.

### **Page 2**

The picture is a robot type face.

### **Page 4**

Shape 1: Square

Shape 2: Octagon (not regular)

Shape 3: Scalene triangle

Shape 4: Isosceles right-angled triangle

Shape 5: Pentagon (not regular)

### **Page 5**

Shape 1: Missing Co-ord (2,5)

Shape 2: Missing Co-ord (4,2)

Shape 3: Missing Co-ord (12,9) or (6,12)

